

INNOMEDIA

# MTA9338-2

## ANALOG TERMINAL ADAPTER

### FEATURE-RICH AND HIGHLY MANAGEABLE TELEPHONE ADAPTER EMPOWERS VoIP SERVICE PROVIDERS

Expanding on InnoMedia's widely deployed Broadband IP Telephony product families, the MTA9338-2 provides crystal-clear wideband voice communications with a high degree of manageability, allowing rapid and scalable SOHO/Business service deployment. The enhanced line diagnostics feature provides added reassurance to the service provider and can reduce customer service expenses.

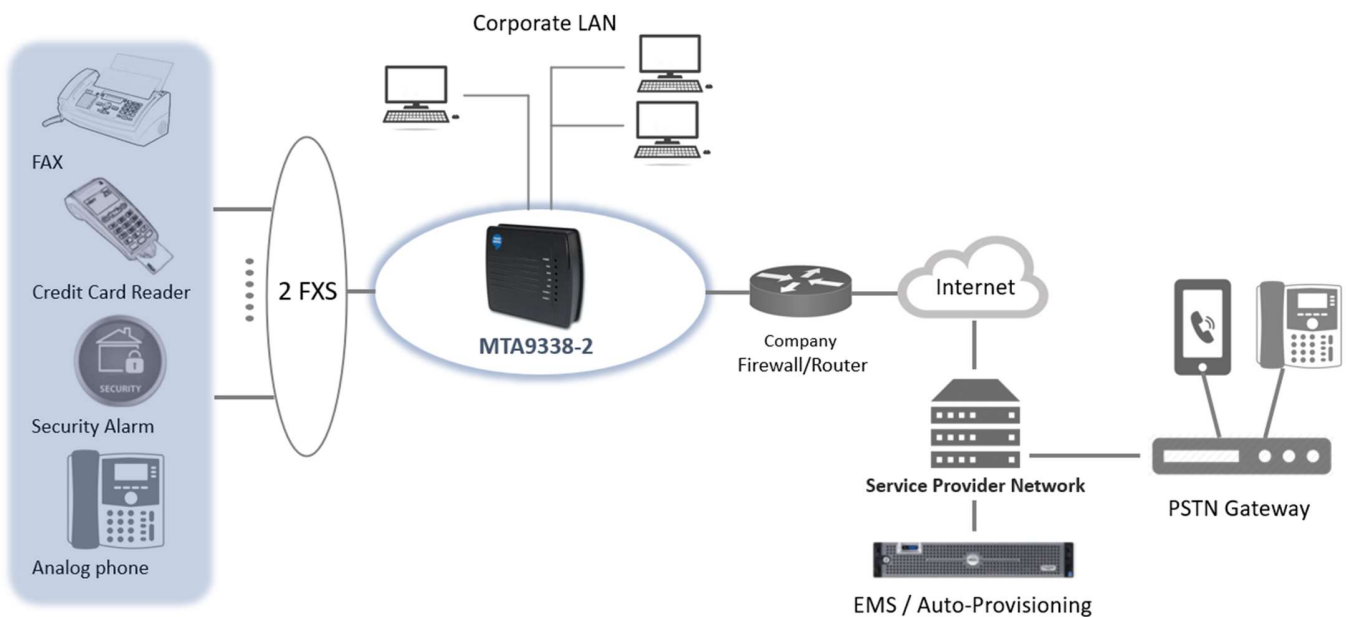
#### KEY BENEFITS

- Feature-rich and very manageable
- Highly interoperable and reliable
- Designed for business environments
  - PBX (Loop start, OSI)
  - FAX (T.38 and G.711 fallback)
  - High and low speed modem support (e.g., for credit card reader support)
- Intra-building GR1089 lightning protection allowing house wiring
- Set-based 3-way calls
- Wideband crystal-clear voice quality
- Advanced QoS features (VLAN, ToS) for optimum voice/data traffic management
- Remote monitoring and diagnostics
- Security built-in with TLS support for SIP signaling, SRTP for RTP media, and HTTPS for provisioning and GUI access
- Seamless PSTN replacement with line diagnostic tests



MTA9338-2

**Comprehensive Feature Set.** The new generation 2-voice-port MTA9338-2 ATA offers service providers a feature rich and highly manageable solution for the small office or business market. It provides exciting features such as wideband codec support (Opus, G.722) to allow superior voice quality, reliable fax transmission with T.38 or G.711 fallback, in-band and RFC2833-based DTMF and low/high-speed modem support for credit card readers and other POS terminals. It can act as a DHCP server for LAN devices, as well as allowing port forwarding. The MTA9338-2 also features VLAN tagging for connected LAN devices.



MTA9338 addressing a seamless PSTN replacement for businesses

**Ease of Use and High Manageability.** The built-in interactive voice response system (IVR) in the MTA9338-2 offers user-friendly status information in 2 languages (English, Spanish), including the device IP address, Ethernet cable connection status, Internet service status, and device registration status. In addition, the MTA9338-2 has an integral element management client which, in conjunction with InnoMedia's carrier-grade Element Management System (EMS), provides full provisioning and device management support even for devices behind NAT routers, as well as sophisticated call quality monitoring. This allows the device to be highly manageable, thus greatly reducing service provider customer support costs.

**Rapid and Secured Deployment.** The MTA9338-2 allows secured connections with TLS for SIP signaling, SRTP for RTP media and various forms of auto-provisioning utilizing HTTP, HTTPS, FTP, or TFTP. The auto-provisioning feature enables dynamic and secure software upgrades as well as in-service configuration updates. In addition, the adoption of an X.509 PKI mechanism further secures the software upgrade process to prevent unauthorized software access. All these features make the MTA9338-2 an ideal solution for service providers looking for rapid and scalable voice service deployments.

**Minimal Support Problems.** The MTA9338-2's GR-909 line diagnostic tests detect the presence of foreign voltages, resistive faults, receiver off-hook and REN violations, thus allowing service providers to offer high-quality voice services for a seamless PSTN replacement.

**GR1089 Protection.** The MTA9338-2 has built-in intra-building GR1089 protection when proper grounding to earth ground is provided for the 3-prong power supply.

## ATA INTERFACES



- (1) Two standard FXS ports to connect an existing analog phone or fax machine to a VoIP service provider
- (2) One 100Base-T RJ-45 Ethernet WAN port for Internet connectivity to the service provider network
- (3) Three 100Base-T RJ-45 Ethernet LAN ports for devices behind the ATA to connect to the Internet

## SPECIFICATIONS

### Product and Package Specifications

Category	Specifications
Telephone Interface	2 FXS voice ports
Ethernet Network Interface	2 RJ45 Ethernet 10/100 Base-T ports (1 WAN, 1 LAN)
Accessories	Ethernet cable, phone cable, AC/DC power adapter

### Software Specifications: Telephony

Category	Specifications
Signaling Protocol	SIP 2.0
SIP Proxy Redundancy	Dynamic through use of NAPTR, DNS SRV, A records
Speech Codec Capabilities	G.711, G.729, G.722, iLBC, Opus
Signal Processing	<ul style="list-style-type: none"> <li>• Echo cancellation: G.168</li> <li>• Caller ID FSK signal regeneration</li> <li>• Attenuation and gain adjustment</li> <li>• Comfort noise generation (CNG)</li> <li>• Visual messaging waiting indicator (VMWI)</li> <li>• Packet loss concealment</li> <li>• Polarity reversal</li> <li>• OSI (Open Switch Interval)</li> <li>• Voice activity detection (VAD)</li> <li>• Jitter buffer: adaptive, fixed</li> <li>• Advanced media processing with NetEQ™</li> <li>• Hook flash event signaling</li> </ul>
FAX Capability	Fax pass-through using G.711 Real-time fax over IP using T.38 fax relay
Voice Features	<ul style="list-style-type: none"> <li>• Configurable dialing plans (digitmap) with interdigit and critical timers</li> <li>• Caller ID blocking, call waiting, call transfer, do not disturb (DND), 3-way conferencing with local mixing, anonymous call rejection</li> <li>• Caller ID generation: FSK</li> <li>• Caller ID with call waiting</li> <li>• Speed dialing</li> <li>• E911 support</li> <li>• Reject anonymous call</li> <li>• Multiple service profiles</li> <li>• TTY support</li> </ul>

Category	Specifications
Security	<ul style="list-style-type: none"> <li>• TLS for SIP signaling</li> <li>• SRTP for RTP media</li> <li>• HTTPS for provisioning and GUI access</li> </ul>
DTMF Tone and IVR	<ul style="list-style-type: none"> <li>• DTMF tone detection and generation: RFC2833 and in-band</li> <li>• IVR in multiple languages (English and Spanish): Plays out any voice stream sent by a SIP Proxy controlled announcement server as well as pre-stored announcements for (1) Device IP (2) Internet cable not connected (3) Internet service down (4) Device not registered with service provider</li> </ul>
Tones	<ul style="list-style-type: none"> <li>• Ring back tone</li> <li>• Off hook warning tone</li> <li>• Message waiting tone</li> <li>• Reorder tone</li> <li>• Busy tone</li> <li>• Dial tone</li> <li>• Call waiting tones (multiple)</li> <li>• Confirmation tone</li> <li>• Multiple country support: <ul style="list-style-type: none"> <li>- CID Type</li> <li>- Tone cadence</li> <li>- Ring cadence (Five)</li> <li>- Splash Ring</li> <li>- Line Impedance</li> </ul> </li> </ul>
SIP Capabilities	SIP INFO for DTMF/Flash Event SIP NOTIFY SIP PING SIP PRACK
GR-909 Line Tests	FEMF/HAZ – Foreign line voltage detection ROH Tests – Receiver off-hook detection REN Test – REN range violation detection Resistive Faults Test – Tip-to-Ring short detection

## Software Specifications: Networking

Category	Specifications
IP and data networking	DNS: NAPTR, SRV record, A record Dynamic host configuration protocol (DHCP) client, or fixed IP DHCP Server (Router mode only) Port Forwarding (Router mode only) ICMP, TCP, UDP, TLS (SIP transport protocol) RTP, RTCP (media protocol) SNTP (simple network time protocol)
QoS	VLAN support Voice packet prioritization over other packet types. TOS settings for: <ul style="list-style-type: none"> <li>• VoIP SIP signaling</li> <li>• Voice media traffic</li> <li>• Host data traffic</li> </ul>

## Software Specifications: OAM&P

Category	Specifications
Voice quality monitor	Voice quality statistics: RTCP/RTCP-XR reports End-of-call quality reporting (MOS, R-factor, jitter, packet loss, delay)
Remote Access	Management consoles: WEB GUI (HTTP, HTTPS), SSH, Telnet Protocols: SNMP v2c and v3, Syslog InnoMedia EMS supports SIP packet and media loopback features

# InnoMedia MTA9338-2

Dynamic Provisioning and Secured Software Upgrade	<ul style="list-style-type: none"><li>• Automated provisioning with in-service configuration update and software upgrade using HTTPS, HTTP, FTP, TFTP</li><li>• Asynchronous server-initiated provisioning using SIP NOTIFY</li></ul>
---	---

## Regulatory Compliance

Category	Specifications
Certifications/Compliance	FCC part 15B

## Hardware and Environmental Specifications

Category	Specifications
Power Consumption	Idle: 2.16W Talk: 3.12W (max. for all FXS ports) Ringing: 4.92W (max. for all FXS ports @ 2REN each)
Loop Current	For load of 600Ω, settable in the range from 25 mA to 40 mA (default 28mA)
Ring Voltage	> 40 VRms @ 2000 ft. (maximum 2 REN per port) 24 AWG loop
Power Supply	Output: DC 12V, 1A; Input: AC 100~240V, 50~60Hz
Dimensions	H x W x D: 1.18 in x 4.60 in x 5.12 in / 30 mm x 117 mm x 130 mm
Weight	Unit: 0.20 kg (0.43 lb) Packaging: 0.48 kg (1.06 lb)
Operating Temperature	32°F to 104°F (0°C to 40°C)
Storage Temperature	-4°F to 158°F (-20°C to 70°C)
Operating Humidity	10 to 90% RH
Storage Humidity	5 to 95% RH

[www.innomedia.com](http://www.innomedia.com)

### InnoMedia Pte Ltd.

Blk 22 Sin Ming Lane #05-87  
Midview City, Singapore 573969

### InnoMedia, Inc

48531 Warm Springs Blvd., Suite 417  
Fremont, CA 94539, USA

### InnoMedia Technology Inc.

3F, No. 3, Industrial East Road IX, Hsinchu Science-Based Industrial Park, Hsinchu TAIWAN 300

### InnoMedia Technology China, Ltd.

Room 302 Housha Yu Bailu Guangchang,  
Shunyi District, Beijing, 101300 CHINA

