



InnoMedia

# iPBX-400

*Quick Install Guide*



[www.innomedia.com](http://www.innomedia.com)

# Table of Contents

**Introduction 2**

**Package Contents 2**

**Installation 3**

**Wall-Mounting Instructions 5**

**Troubleshooting 6**

**Appendix A. LED Status Summary 7**

**Specifications 7**

**Federal Communication Commission Interference  
Statement 8**

## Introduction

The InnoMedia iPBX comes with all the IP-PBX features you'd expect and SIP Trunking, the industry-accepted approach for direct IP peering to VoIP Service Providers. With SIP Trunking enabled, the iPBX is capable of managing in a secured manner, an enterprise's telephony network.

## Package Contents

The InnoMedia iPBX-400 comes with the following items:

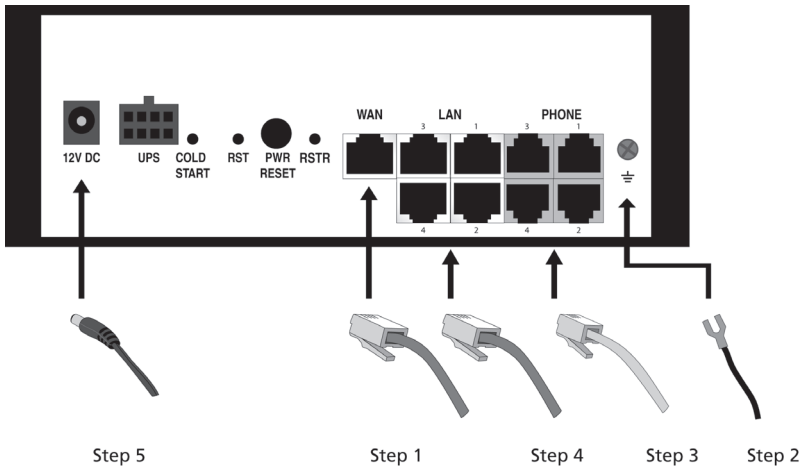
- 1 iPBX
- 1 RJ-45 Cable
- 2 RJ-11 Phone Cables
- 1 AC/DC Power Adapter
- 1 Quick Install Guide
- 1 Battery Backup Supply
- 1 Wall-Mounting Template
- 1 CD



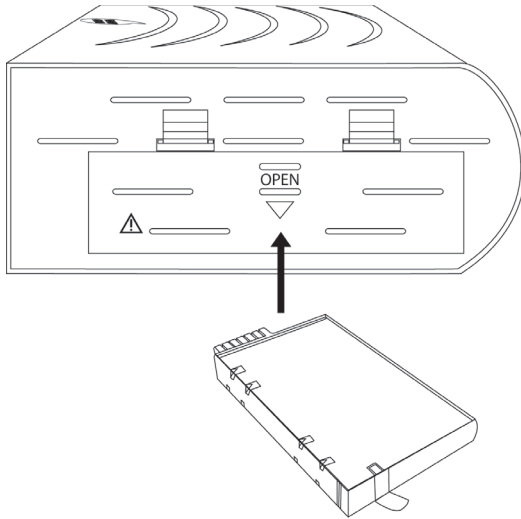
## CAUTION

Disconnect power adapter from the equipment before removing the cover of the battery compartment.

# Installation



1. Connect the RJ-45 cable to the “WAN” connector.
2. Connect a grounding cable to be connected to the ground screw terminal as shown in the diagram.
3. Connect any standard analog telephone or fax machine to iPBX’s “PHONE” connector, labeled 1-4.
4. Connect your PC to any LAN port using included RJ-45 cable.
5. Connect included AC power cable to the electrical outlet and its cable to the “12V DC” connector.
6. Optionally, open the battery compartment and insert the battery. Put the cover back in place.



Step 6

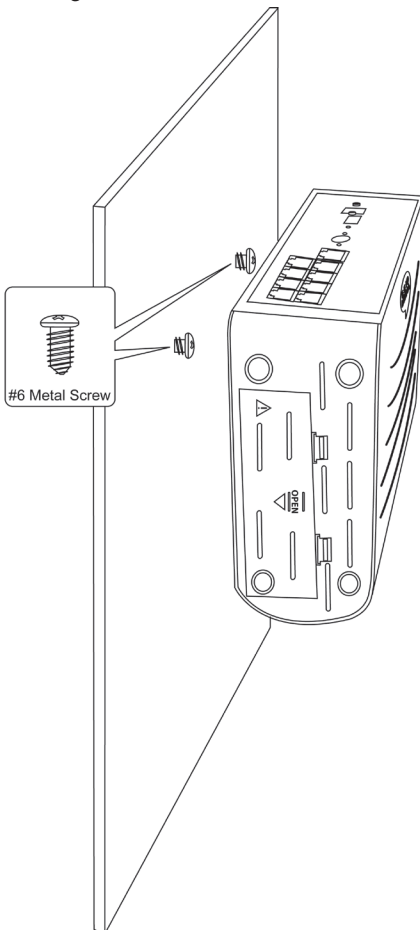
7. Power on iPBX-400. If you have analog phones that are connected to iPBX-400 Phone interface, you may start placing and receiving telephones with the default extension numbers, from 400 to 403.

8. Please refer to the administrative guide (in the CD), to start the network placement and telephony plan for your enterprise. (Or you may download the latest document from the following path: [http://www.innomedia.com/support\\_manuals.shtml](http://www.innomedia.com/support_manuals.shtml))

# Wall-Mounting Instructions

Optionally, you may choose to mount your iPBX-400 on the wall.

1. Use the provided template to drill two holes on the wall.
2. Use a screwdriver to install one #6 metal screw in each hole. Leave the screw heads 1/4 to 3/8 inch away from the wall.
3. Position the iPBX with the ports at the top.
4. Place the unit above the screws and lower it so the screw heads are inside and at the tops of the wall mount slots on the back of the unit.
5. Adjust to fit. If the unit is too loose, remove it from the wall, slightly tighten screws, and rehang.



# Troubleshooting

**Problem:**

Telephone has no dial tone

**Solution:**

1. Ensure that all cables (power, Ethernet, telephone) are properly connected to the iPBX. Ensure that iPBX's AC power adapter is plugged in, and "PWR" indicator lights are ON (see Front Cover Picture).
2. Pick up telephone handset (phone off-hook), check for corresponding Phone (1-4) indicator light to be ON. Also, the "WAN" indicator light is Blinking Amber. If not, please disconnect iPBX power cable, and then reconnect it again (see Front Cover Picture).
3. If previous steps fail, report the failure to service provider for attention.

**Problem:**

Cannot establish Internet connection.

**Solution:**

1. If the PWR, WAN, and LAN LEDs are lit, the iPBX is working properly. Try restarting the computer so that it could reestablish a connection with the cable modem.
2. Power cycle the iPBX by switching the power to the Off position, remove the power adapter from the electrical outlet and plug it back in. Wait several minutes for the iPBX to reestablish communications with your cable service provider.
3. If your PC is connected to a hub or gateway, try connecting the PC directly into the iPBX.
4. Your Ethernet cable may be damaged. Try using another cable.
5. If none of these suggestions work, contact your cable service provider for further assistance.

## Appendix A. LED Status Summary

LED / Control	Blinking State	iPBX-400 State
PWR	Steady Green	Device power is on
	Off	Device power is off
UPS	Solid Orange	Battery Fully Charged
	Blinking Orange	Battery is charging (AC power on)
	Solid Green	Battery is in use (AC power off)
	Blinking Red	Battery Low (AC power off)
	Solid Red	Failed or Bad battery (AC power off)
	Off	Battery discharged (AC power off)
BATT-INT	Solid Orange	Battery Fully Charged
	Blinking Orange	Battery is charging (AC power on)
	Solid Green	Battery is in use (AC power off)
	Blinking Red	Battery Low (AC power off)
	Solid Red	Failed or Bad battery (AC power off)
	Off	Battery discharged (AC power off)
WAN	Blinking Amber	When Data is passed through WAN Ethernet port
	Off	No connection to Ethernet port
LAN 1-4	Blinking Amber	When Data is passed while PC is connected to LAN Ethernet port
	Off	No PC connected to USB or LAN Ethernet ports
PHONE 1-4	Blinking Amber	The connected telephone handset is on the hook (not in use) and there are new voice mail messages
	Steady Amber	The connected telephone handset is off the hook
	Off	The connected telephone handset is on the hook (not in use) and there are no new voice mail messages

## Specifications

Telephone Interface	4 FXS voice ports	
	Connector	RJ-11 REN=5
	Signaling	Loop start
Network Interface - Uplink	Connector	RJ-45
Network Interface - Downlink	10/100 Base-T	
	Connector	RJ-45
Dimension	2.5 in (H) x 7.8 in (W) x 6.0 in (D)	
	63.5 mm (H) x 198 mm (W) x 152 mm (D)	
Power Supply	AC 100-240V/50-60Hz (DC 12V @ 4.0 Amps)	
On Battery	Li-ion battery providing 4 hrs Talk Time / 6 hrs Standby Time	
Operating Temperature	32°F to 104°F (0°C to 40°C)	

# Federal Communication Commission Interference Statement

This equipment has been tested and found to comply with the limits for a Class B digital device, pursuant to Part 15 of the FCC Rules. These limits are designed to provide reasonable protection against harmful interference in a residential installation. This equipment generates, uses and can radiate radio frequency energy and, if not installed and used in accordance with the instructions, may cause harmful interference to radio communications. However, there is no guarantee that interference will not occur in a particular installation. If this equipment does cause harmful interference to radio or television reception, which can be determined by turning the equipment off and on, the user is encouraged to try to correct the interference by one of the following measures:

- Reorient or relocate the receiving antenna.
- Increase the separation between the equipment and receiver.
- Connect the equipment into an outlet on a circuit different from that to which the receiver is connected.
- Consult the dealer or an experienced radio/TV technician for help.

This device complies with Part 15 of the FCC Rules. Operation is subject to the following two conditions: (1) This device may not cause harmful interference, and (2) this device must accept any interference received, including interference that may cause undesired operation.

FCC Caution: Any changes or modifications not expressly approved by the party responsible for compliance could void the user's authority to operate this equipment.

IEEE 802.11b or 802.11g operation of this product in the U.S.A. is firmware-limited to channels 1 through 11.

## **IMPORTANT NOTE:**

### **FCC Radiation Exposure Statement:**

This equipment complies with FCC radiation exposure limits set forth for an uncontrolled environment. This equipment should be installed and operated with minimum distance 20cm between the radiator & your body.

This transmitter must not be co-located or operating in conjunction with any other antenna or transmitter.

