

# INNOMEDIA

# MTA 3030Re

## MULTIMEDIA TERMINAL ADAPTER

### DUAL-MODE ANALOG VOIP NAT ROUTER

The MTA 3030Re is the most versatile VOIP CPE available to service operators today. Combining the best features of InnoMedia's award-winning IP telephony products, the MTA 3030Re offers unsurpassed quality and ease of deployment. Its PSTN capability as well as its NAT router function solves the problem of device clutter in the home network environment and offers a more reliable service experience for end-users.

#### KEY BENEFITS

Intelligent PSTN Routing for Service Reliability and E911 Assurance

Offers NAT Router Features for Home Networking Flexibility

Provides QoS Features to Ensure Optimum Voice Quality

Easy to Install and Auto-Provision



#### VoIP And PSTN Connectivity

Many CPE devices allow a user to connect their phone to only the VOIP network, as a second line. The MTA 3030Re allows users to connect a phone to a single device that provides the cost-effectiveness of VOIP and reliability of the PSTN during power failures or loss of broadband network connectivity. This helps reduce service interruption calls, and also addresses E911 issues. The MTA 3030Re is capable of intelligently managing such call routing based on how the service operator provisions its digit map.

#### QoS Features Ensure Optimum Voice Quality

Packetized voice is very sensitive to variances in the condition of the broadband network. Latency, packet loss, jitter, and bandwidth constraints all contribute to voice quality degradation in IP telephony systems. The MTA 3030Re utilizes various mechanisms to mitigate such problems. IP precedence tagging tags voice packets for prioritization. Within the MTA, separate queues are allocated for data and voice packets so that voice traffic is transmitted first and data traffic second. Finally, an adaptive jitter buffer dynamically adjusts itself to the changing condition of the network in order to minimize the impact to voice quality.

#### NAT Router Capability For Home Networking

The MTA 3030Re's integrated NAT router capability positions it as an ideal VOIP device in the broadband-enabled home. Providing internet-sharing capability as well as access control features, the MTA 3030Re's NAT router function offers the convenience of a home networking solution without the added clutter of an extra router device.

#### Easy To Install and Auto-Provision

One of the main concerns of service operators is to reduce the complexity and cost of deployment of CPE to end-users. To this end, the MTA 3030Re is designed as an easy self-installable device reducing the high cost of service truck rolls to the customer premises. Auto-provisioning capabilities then allow the service operator to manage and configure the unit remotely. The end-user simply plugs a phone in and starts making phone calls.



## KEY FEATURES

### PSTN Fallback for

- Power failure
- IP network failure
- VOIP network failure
- Intelligent Digit Map routing

### Broadband NAT Router

- NAT
- Port Forwarding
- Access Filtering
- VPN pass-through

### QoS Features

- IP Precedence tagging
- Priority switch
- Separate queues for voice/data
- Adaptive jitter buffer

### Easy Installation and Auto Provisioning

- HTTP and HTTP-Sec provisioning
- IP address announcement
- TFTP firmware upgrades
- Web-based administration

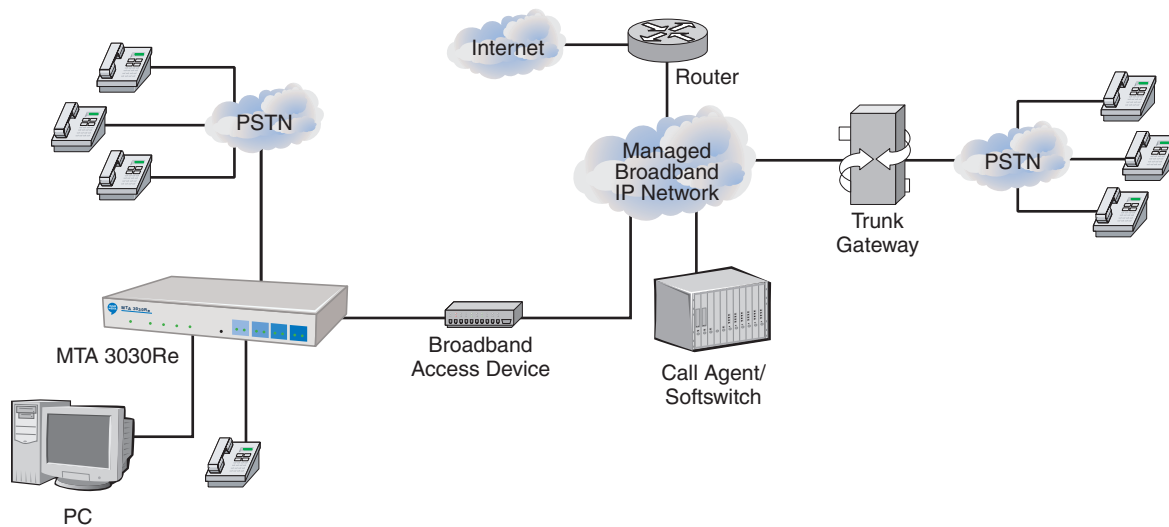


Figure 1 - Voice Services Over Both PSTN and IP Networks, NAT router capability

## SPECIFICATIONS

### Product Specification

Category	Specification
Telephone Interface	4 FXS voice ports
PSTN Interface	4 PSTN voice ports
Network Interface	10/100 Base-T RJ-45 Uplink and Downlink ports
Accessory	Ethernet Cable, AC/DC Power Adapter

## Software Specification

Category	Specification
Protocols	SIP 2.0
Speech Codec Capabilities	G.711 and one of the following: G.726 G.728; G.729E (High quality high complexity codecs) G.723.1; G.729A (Low bit rate codecs) Supports 3-way conferencing with compression
Quality of Service	IEEE 802.1p/q; IP TOS Tagging; Built-in Priority Switch; Rate limiting (upstream/downstream); Adaptive jitter buffer
Signal Processing	Echo cancellation: G.168 Fax (fall-back to G.711) Caller ID FSK signal regeneration Line reversal
Certification	FCC part 15B
Tones	Ring back tone                      Busy tone Reorder tone                        Dial tone Off hook warning tone              Message waiting tone (MWI)/Stutter tone Call waiting tone
DTMF Tone	DTMF tone detection and generation/RFC2833
Announcements	Play out any voice stream sent by Call Agent or SIP Proxy controlled announcement server
OAM&P	Access components implemented: CLI, TFTP, HTTP 1.0, SNMP, Telnet, DHCP or DNS, HTTPS (available soon) Works with any SNMP (v.1, v.2c, v.3)-based EMS Offers web-based access as well as TFTP-based remote software downloads/upgrades Provisionable set feature codes
Features	Built-in DHCP server NAT capabilities for simultaneous Internet access for multiple PC's IP routing and port forwarding IP/Domain filtering

## Physical Specification

Category	Specification
Power Consumption	Idle: 12V/0.27A (3.24W) / Talking: 12V/0.41A (4.92W)
Power Supply	Output: DC 12V, 1000mA / Input: AC120V, 60Hz, 500mA
Dimensions	8.30 in (W) x 5.35 in (D) x 1.53 in (H) / 211 mm (W) x 136 mm (D) x 39 mm (H)
Operating Temperature	32°F to 122°F (0°C to 50°C)
Storage Temperature	-4°F to 158°F (-20°C to 70°C)
Operating Humidity	10 to 90% RH
Storage Humidity	5 to 95% RH

[www.innomedia.com](http://www.innomedia.com)

**InnoMedia Pte Ltd.**

10 Science Park Road #03-04  
The Alpha, Singapore Science Park II, SINGAPORE 117684  
Ph: (65) 6872 0828; Fax: (65) 6872 0900

**InnoMedia Technology Inc.**

3F, No. 3, Industrial East Road IX  
Hsinchu Science-Based Industrial Park, Hsinchu TAIWAN 300  
Ph: (886) 3 564 1299; Fax: (886) 3 564 1589

**InnoMedia, Inc.**

128 Baytech Drive  
San Jose, CA 95134 USA  
Ph: (408) 432-5400; Fax: (408) 432-5404

**InnoMedia, Inc.**

Room 1405, Prime Tower, #22 Chaowai Street  
Chaoyang District, Beijing 100020 CHINA  
Ph: (86) 10 6588 5141; Fax: (86) 10 6588 5140

